



**Dear Larkspur District Families,**

Over 1,250 students attend Neil Cummins and Hall daily. Your family's commuting choices have physical, environmental, and community impacts. Please read the following information about commuting options and the Street Smarts Marin program. When finished, please take a moment to **complete and return the form below** to your classroom teacher or the school office.

### **WALKING or BIKING**

If you live close enough, walk or bike with your children to school. This allows you to spend quality time with them and gives them exercise before class. Or if they are mature enough, let them walk or bike with their friends. They will arrive at school awake and ready to learn. California Department of Health Services studies show that children who are physically fit score better on tests

### **BUSING**

If you live along North Magnolia or in East Corte Madera consider taking one of the buses. For more information about routes, times, and student discount tickets, please go to the "Marin Transit" link on the Hall Website or the "Transportation" link on the Neil Cummins website.

### **SCHOOLPOOL**

Find other parents to share your commute to school whether driving, walking, biking, or busing. This reduces the number of cars in the queue every day, reduces congestion on our streets, and gives you more time to attend to other needs in the morning.

This fall we are adding a SchoolPool neighborhood designation to the Larkspur School District Directory so that finding future SchoolPool companions will be even easier. Please complete the SchoolPool form included with this letter *whether you choose to participate or not* and return the form to your child's classroom teacher or the school office. The District strongly recommends this program from Safe Routes to Schools.

### **DRIVE SAFELY**

The Larkspur School District, and the Hall and Neil Cummins PTAs are proud to be founding partners of "Street Smarts Marin". If you choose to drive your children to school, please be "Street Smart." Remember to obey all traffic laws and observe school guidelines for drop-off and pick-up. Drive slowly and carefully. Children are unpredictable and you never know when a child might dart out in front of you. Do not block sidewalks, driveways and bike paths, and stop at all crosswalks. Be sure to look right before you turn right to ensure that a child is not crossing the street. Be sure to review the "Street Smarts" brochure in your child's backpack mail this week. For information on improving our Street Smarts in Larkspur/Corte Madera see [www.StreetSmartsMarin.org](http://www.StreetSmartsMarin.org).

**We look forward to a safe and healthy school year. Please consider one of the alternatives for transporting your child to school. Your choice will contribute to the health and safety of the whole community.**

Sincerely,

**Valerie Pitts**  
*Superintendent*  
Larkspur School District

**Marilyn Clark**  
*Principal*  
Neil Cummins

**Daniel Norbutas**  
*Principal*  
Hall Middle School

Please print this page, fill it out, and return this form to your child's teacher, or the school office. Paper copies are available in the school office, and electronic copies are in the "forms" section of the district and school websites.

\_\_\_\_\_ Yes, please include my child(ren) in the SchoolPool directory

\_\_\_\_\_ Not at this time.

Child's name Grade SchoolPool zone(s)\*

---

---

---

---

---

---

Address

---

Address

---

Parent name (please print)

---

Signature

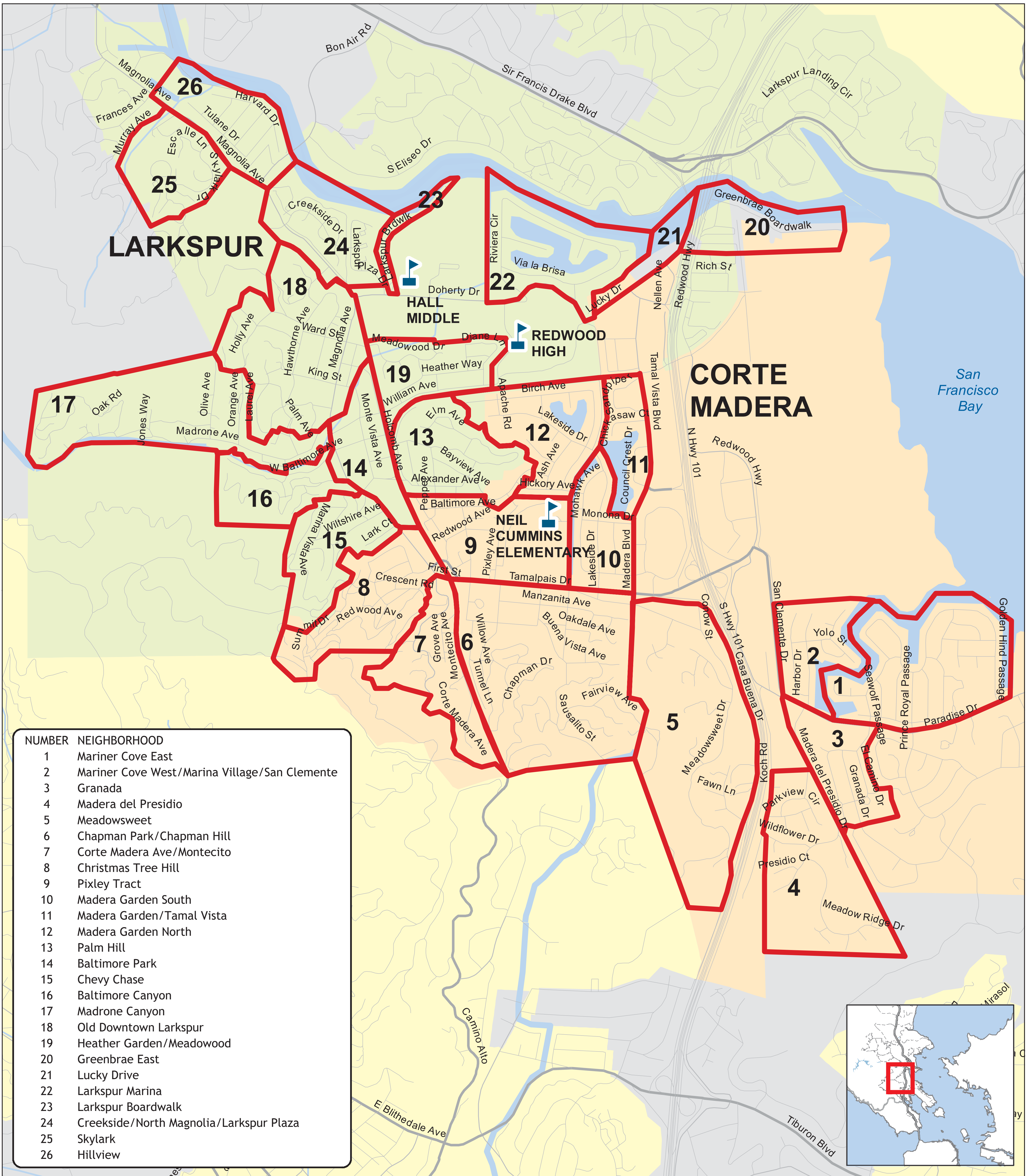
---

\* see map on following page or in the "forms" section of the school website

SchoolPool zone(s) will be displayed along with your child's name in the home room class list section as well as the alphabetical section of the directory.

**For assistance please contact Tasmin Pessa at 924-5815 or [tpessa@pacbell.net](mailto:tpessa@pacbell.net)**







NUMBER	NEIGHBORHOOD
1	Mariner Cove East
2	Mariner Cove West/Marina Village/San Clemente
3	Granada
4	Madera del Presidio
5	Meadowsweet
6	Chapman Park/Chapman Hill
7	Corte Madera Ave/Montecito
8	Christmas Tree Hill
9	Pixley Tract
10	Madera Garden South
11	Madera Garden/Tamal Vista
12	Madera Garden North
13	Palm Hill
14	Baltimore Park
15	Chevy Chase
16	Baltimore Canyon
17	Madrone Canyon
18	Old Downtown Larkspur
19	Heather Garden/Meadowood
20	Greenbrae East
21	Lucky Drive
22	Larkspur Marina
23	Larkspur Boardwalk
24	Creekside/North Magnolia/Larkspur Plaza
25	Skylark
26	Hillview



# LARKSPUR SCHOOL DISTRICT SCHOOLPOOL NEIGHBORHOOD MAP

[www.saferoutestoschools.org](http://www.saferoutestoschools.org)

 Schools  
 Neighborhood Boundaries

